



## FAS Nonprofit Asset Inventory

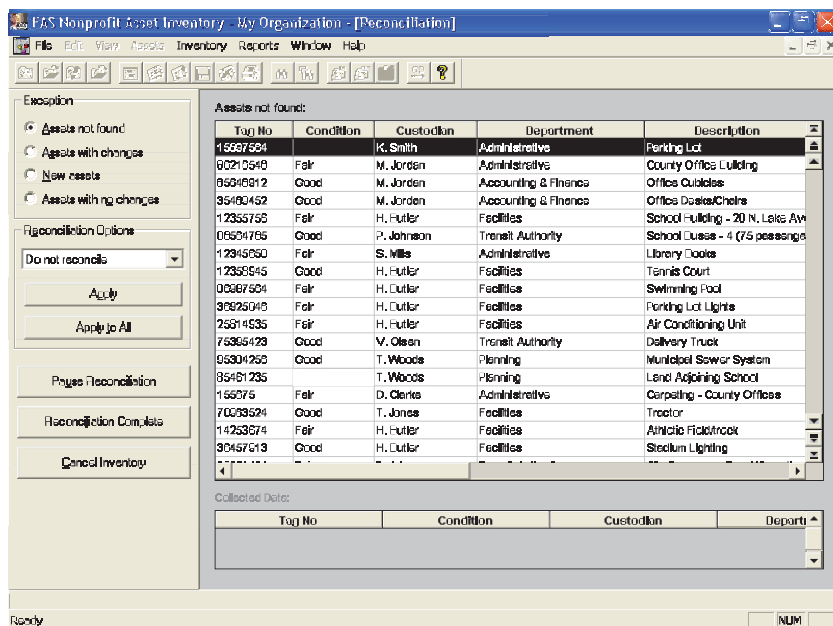
FAS Nonprofit Asset Inventory offers a comprehensive solution to meet the unique requirements of nonprofit organizations for fixed asset tracking and data collection.

Providing you with the flexibility you need to satisfy your specific requirements, FAS Nonprofit Asset Inventory enables you to achieve total control over your fixed asset inventories, and efficiently create and track multiple physical inventories of assets at every step. You can thoroughly track your fixed asset inventory while eliminating lost or stolen assets and reducing insurance overpayments.

With an easy-to-use wizard that walks you through every step of conducting and reconciling your inventory, FAS Nonprofit Asset Inventory makes automating your fixed asset inventory tracking simple. FAS Nonprofit Asset Inventory allows you to efficiently perform physical inventories using state-of-the-art Windows OS bar code readers. You can conduct multiple inventories concurrently at various sites and reconcile data at one central location. And, since it has more than 40 fully customizable fields, you can control data entry with notes and images to describe each asset record.

The flexibility of FAS Nonprofit Asset Inventory allows it to support both "Baseline" inventories for creating an initial list of fixed assets, and "Dynamic" inventories of existing assets. Combined with FAS Nonprofit Asset Accounting, you have a powerful tool to meet all of your tracking and reporting needs.

From developing innovative products to providing quality customer support, Sage Software is dedicated to surpassing expectations in all aspects of your organization. For more information about FAS Nonprofit Asset Inventory, please call us toll free at 800-368-2405, or visit our Web site at [www.sagefasnonprofit.com](http://www.sagefasnonprofit.com).



### BENEFITS

#### COMPREHENSIVE TRACKING

Check-In/Check-Out feature with activity history enables monitoring of mobile assets, and available user fields allow for data entry to be standardized. Photos and documents for each asset can be stored including class, acquisition date, GL asset account, location, and much more, eliminating duplication in asset tracking and facilitating clean audits.

#### FLEXIBLE CONFIGURATIONS

With the wealth of features offered including configurable data fields, and "Asset Templates" that promote data integrity and accelerate the process of entering new assets, you can customize your Sage FAS Nonprofit fixed assets solution to work the way you want to.

#### STREAMLINED INVENTORY

Asset labels and bar code readers complete the inventory solution: optional components, durable, pre-printed bar code labels made of polyester, foil or aluminum and Windows Mobile bar code readers make tracking assets quick, easy, and accurate.

#### SECURE ACCESS

Security profiles can be defined differently for each individual user that has access to the system, ensuring that only those individuals allowed to change the data are able to.

#### QUALITY SUPPORT

Sage FAS SupportPlus members benefit from an unmatched level of customer support. Visit our online knowledgebase, or call the Sage FAS Customer Support center and our friendly, knowledgeable experts are ready to help. SupportPlus members can also download software upgrades, access multimedia tutorials and take advantage of exclusive discounts on new products.

◀ FAS Nonprofit Asset Inventory delivers advanced inventory capabilities and allows you to report on the information you need.

**Powerful Reports**

The FAS Nonprofit Asset Inventory family provides the necessary reports for you to track your assets and obtain crucial information about individual assets or groups of assets. You can quickly and accurately report on:

- Fixed asset listing
- Asset detail
- Collected data from bar code readers
- Checked out assets
- Overdue assets
- Transferred assets
- Inventory exceptions found
- Fixed asset history
- Duplicate asset tag notification
- And more

FAS Nonprofit Asset Inventory is designed to meet the number of assets of your organization:

**FAS Nonprofit 100 Asset Inventory**

- Stand-alone or multiple network user seats
- Designed for entities with fewer assets

**FAS Nonprofit 500 Asset Inventory**

- Faster processing times with Microsoft SQL infrastructures
- Designed with client/server architecture and support for multiple databases
- Easily accounts for hundreds of thousands of fixed assets

Contact a Sage Software Representative now at **800-368-2405**.

Minimum System Requirements		
	Single User / Network Client Requirements	Network Server Requirements
Operating System	Microsoft® Windows 2000 with SP 4; Windows XP (Professional or Home) with SP 1 or 2; Windows Vista	Novell® NetWare® Server v6.0, or 6.5; Windows 2000 Server with SP 4; Windows Server® 2003 (Standard or Enterprise); Microsoft SQL Server 2K and Microsoft SQL Server 2005
Processor	600 Mhz or higher minimum; 1 Ghz or higher recommended	600 Mhz or higher minimum; 1 Ghz or higher recommended
RAM	128MB or higher	Multi-purpose servers: 256MB of RAM or higher
Free Disk Space	300MB for the FAS Program, 70MB minimum for FAS Report Writer (if applicable); 200MB required for full install of FAS Report Writer (if applicable)	600MB for the FAS program installation

Remote Access Requirements	
	Operating System and/or Third-party Software
Client-Based Solutions	Windows XP with Remote Desktop Connection enabled Third-party remote access solution (such as PC Anywhere™)
Server- and Network-Based Solutions	Windows 2000 running Windows Terminal Services with SP 4; Windows Server™ 2003 running Windows Terminal Services (Standard Edition or Enterprise Edition)  Windows 2000 with SP 4 or Windows XP (Professional or Home) with SP 1 or 2, in conjunction with Citrix® Presentation Server  Third-party Virtual Private Network (VPN)  <i>NOTE: Cannot be used across subnets, VPNs or WANs without Windows Terminal Services or Citrix.</i>

\*Sage FAS 500 Fixed Assets can be divided between an application server and a database server.

NOTE: Requires the following Microsoft SQL Server configurations: - Character Set = ISO 8859-1 (default) - Sort Order = Dictionary Order, Case Insensitive (default) - Mixed mode authentication.



www.IMSolutions.net  
Toll Free 877.208.1175, Facsimile 727.797.6181  
26133 US Highway 19 North, Suite 314  
Clearwater, FL 33763-2017